



2017

## Determination of urea in milk based on N-bromosuccinimide–dichlorofluorescein postchemiluminescence method

Follow this and additional works at: <https://www.jfda-online.com/journal>

 Part of the [Food Science Commons](#), [Medicinal Chemistry and Pharmaceutics Commons](#), [Pharmacology Commons](#), and the [Toxicology Commons](#)



This work is licensed under a [Creative Commons Attribution-Noncommercial-No Derivative Works 4.0 License](#).

---

### Recommended Citation

Nie, F.; Wang, N.; Xu, P.; and Zheng, J. (2017) "Determination of urea in milk based on N-bromosuccinimide–dichlorofluorescein postchemiluminescence method," *Journal of Food and Drug Analysis*: Vol. 25 : Iss. 3 , Article 31.

Available at: <https://doi.org/10.1016/j.jfda.2016.05.009>

This Original Article is brought to you for free and open access by Journal of Food and Drug Analysis. It has been accepted for inclusion in Journal of Food and Drug Analysis by an authorized editor of Journal of Food and Drug Analysis.

Available online at [www.sciencedirect.com](http://www.sciencedirect.com)

ScienceDirect

journal homepage: [www.jfda-online.com](http://www.jfda-online.com)

## Original Article

# Determination of urea in milk based on *N*-bromosuccinimide–dichlorofluorescein postchemiluminescence method

Fei Nie<sup>\*</sup>, Na Wang, Pan Xu, Jianbin Zheng

Institute of Analytical Science, Shaanxi Provincial Key Laboratory of Electroanalytical Chemistry, Northwest University, Xi'an, Shaanxi 710069, China

## ARTICLE INFO

## Article history:

Received 19 February 2016

Received in revised form

13 May 2016

Accepted 24 May 2016

Available online 6 August 2016

## Keywords:

dichlorofluorescein

milk

*N*-bromosuccinimide

postchemiluminescence

urea

## ABSTRACT

A new postchemiluminescence (PCL) reaction was observed when urea was injected into the reaction mixture after the CL reaction of *N*-bromosuccinimide and dichlorofluorescein. A possible reaction mechanism was proposed based on the studies of the CL kinetic characteristics, CL spectra, fluorescence spectra, and other experiments. A new flow injection CL method for the determination of urea was established based on the PCL reaction. The relative standard deviation for the determination of urea was 1.3% ( $n = 11$ ,  $c = 5.0 \times 10^{-8}$  g/mL). The CL intensity responded linearly to the concentration of urea in the range  $2.0 \times 10^{-9}$ – $1.0 \times 10^{-6}$  g/mL ( $r = 0.9992$ ). The detection limit was  $7 \times 10^{-10}$  g/mL. The method had been applied to the determination of urea in milk with satisfactory results.

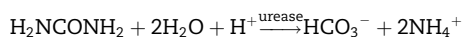
Copyright © 2016, Food and Drug Administration, Taiwan. Published by Elsevier Taiwan LLC. This is an open access article under the CC BY-NC-ND license (<http://creativecommons.org/licenses/by-nc-nd/4.0/>).

## 1. Introduction

Urea is a common fertilizer widely used in agriculture. It is a final metabolic product of proteins and amino acids in the animal body [1]. Urea in blood is one of the most important indicators for several renal diseases. The levels of urea in milk must be periodically monitored, because they can be used to predict the state of animal health, as an indicator of the protein-feeding efficiency. However, to improve the protein content of milk, some profit-seeking producers try to add urea into milk, which may pose a direct health threat to humans.

Therefore, it is necessary to establish a method for analyzing urea with high sensitivity and selectivity.

The analytical methods typically used for urea include high-performance liquid chromatography [2], conductometry [3,4], potentiometry [5,6], amperometry [7], fluorimetry [8], and spectrometry [9]. Many of these methods are based on the enzymatic reaction wherein the enzyme catalyzes the conversion of urea to hydrogenocarbonate and ammonium as follows:



<sup>\*</sup> Corresponding author. Institute of Analytical Science, Shaanxi Provincial Key Laboratory of Electroanalytical Chemistry, Northwest University, Taibai North Road 229, Xi'an 710069, Shaanxi, China.

E-mail address: [niefei@nwu.edu.cn](mailto:niefei@nwu.edu.cn) (F. Nie).

<http://dx.doi.org/10.1016/j.jfda.2016.05.009>

1021-9498/Copyright © 2016, Food and Drug Administration, Taiwan. Published by Elsevier Taiwan LLC. This is an open access article under the CC BY-NC-ND license (<http://creativecommons.org/licenses/by-nc-nd/4.0/>).

Generally, the enzymatic reactions are uncontrollable because the enzyme activities are particularly labile under harsh conditions [10–12]. Therefore, it is better to find new methods for urea analysis that do not require using enzymes.

Chemiluminescence (CL) analysis has received much attention in various fields because it is highly sensitive, has a wide linear range, and only requires simple instruments to perform. CL analyses for urea determination have already been reported [13–16]. These methods were simple and based on nonenzymatic reactions. Most of these methods are based on the CL reaction of urea with oxidants and CL reagent. Unfortunately, the drawback of these methods is their poor detection limits because oxidants can oxidize CL reagents to produce strong a CL signal under the same condition that would be the background signal during the sample determination. The high background signal will have a negative influence on the sensitivity of the CL method. For example, Li et al [13] have reported the CL method of using urea–*N*-bromosuccinimide (NBS)–dichlorofluorescein (DCF) system to determine urea [13]. In their work, NBS was used as the oxidant and DCF was the CL reagent. NBS oxidized DCF accompanied with a very strong CL signal, which was the blank signal for the urea determination. However, the high blank signal influenced the sensitivity of the method. Therefore, the detection limit for urea determination was only  $2.7 \times 10^{-6}$  mol/L.

Du et al [17] and Sun and Lu [18] found that a new CL reaction will be generated when some substances are added into the solution in which the former CL reaction had finished. They called this as postchemiluminescence (PCL) [17,18]. Compared with regular CL methods, PCL methods always exhibit better sensitivity because the high background signal would be largely decreased by controlling the triggering time of the PCL reaction.

In this work, it was found that urea can initiate a PCL reaction in the NBS–DCF system. A new method for the determination of urea was established by combining the CL reaction with the flow injection technique. NBS and DCF were mixed first. After they have reacted sufficiently, urea was added and the PCL signal was generated, which was used for the determination. Because the high blank signal was eliminated, the sensitivity of the method could be improved considerably. The CL intensity responded linearly to the concentration of urea in the range  $2.0 \times 10^{-9}$ – $1.0 \times 10^{-6}$  g/mL ( $r = 0.9992$ ), and the detection limit was  $7 \times 10^{-10}$  g/mL. The relative standard deviation for the determination of urea was 1.3% ( $n = 11$ ,  $c = 5.0 \times 10^{-8}$  g/mL). The method had been applied to the determination of urea in milk, and the results are in good agreement with those obtained using the colorimetric method [19]. A possible reaction mechanism was proposed based on the studies of the CL kinetic characteristics, the CL spectra, fluorescence spectra, and other experiments.

## 2. Experimental

### 2.1. Apparatus

The model IFFM-D flow injection apparatus (Remex Analytical Instrument Limited Co., Xi'an, China) equipped with

automatic injection system and detecting system was used. All the experimental components were linked with polytetrafluoroethylene flow tubes (0.8 mm i.d.). The flow cell made by twining colorless glass tubes (20 cm length, 2 mm i.d.) into a spiral disk shape, and it was placed in front of the photomultiplier tube. The CL signal was acquired by a personal computer.

The fluorescence spectra were measured on a 970CRT spectrofluorometer (Shanghai Analysis Instrument Main Plant, Shanghai, China). UV–vis spectra were obtained on a UV-2550 spectrophotometer (Shimadzu, Kyoto, Japan). Ultrapure water was supplied by a Milli-Q system (Millipore Corp., Bedford, MA, USA).

### 2.2. Reagents

Urea and NBS were purchased from Sigma-Aldrich Co. LLC (Shanghai, China). DCF was purchased from Sinopharm Chemical Reagent Co. Ltd. (Shanghai, China).

The standard solution of urea ( $5.00 \times 10^{-4}$  g/mL) was prepared by dissolving 0.0500 g urea with 100 mL water and then diluting to proper concentration with water.

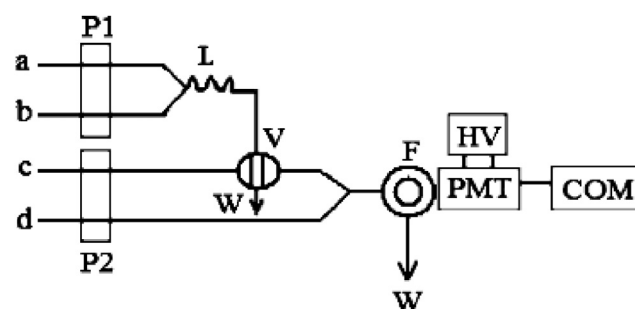
The stock solution ( $1.0 \times 10^{-2}$  mol/L) of DCF was prepared by dissolving 0.4 g DCF with 5 mL NaOH (1.0 mol/L) and then diluting to 100 mL with water.

The NBS solution ( $1.0 \times 10^{-2}$  mol/L) was prepared daily by dissolving 0.18 g NBS with 100 mL water. It remained stable for 2 days.

All reagents used were of analytical grade. Ultrapure water was used throughout the whole experiment.

### 2.3. Procedure

In Figure 1, flow lines (a, b, c, and d) are connected with NBS solution, DCF solution, H<sub>2</sub>O, and urea standard solution, respectively. NBS solution was first mixed with DCF solution via Y-piece 1. The mixture reacted fully in mixing tube L, then was injected into water by a six-way injection valve. With the help of the water carrier, the mixed stream was merged with urea solution by means of Y-piece 2 to generate PCL. The peak



**Figure 1** – Schematic diagram of the flow system. a, NBS solution; b, DCF solution; c, H<sub>2</sub>O; d, urea standard/sample solution. COM = computer; DCF = dichlorofluorescein; F = flow cell; HV = high voltage; L = mixing tube; NBS = *N*-bromosuccinimide; P = peristaltic pump; PMT = photomultiplier tube; V = six-way valve; W = waste.

height of the CL signal was recorded. The concentration of urea was quantified by the relative peak height ( $\Delta I = I_{\text{sample}} - I_{\text{blank}}$ ).

## 2.4. Sample preparation

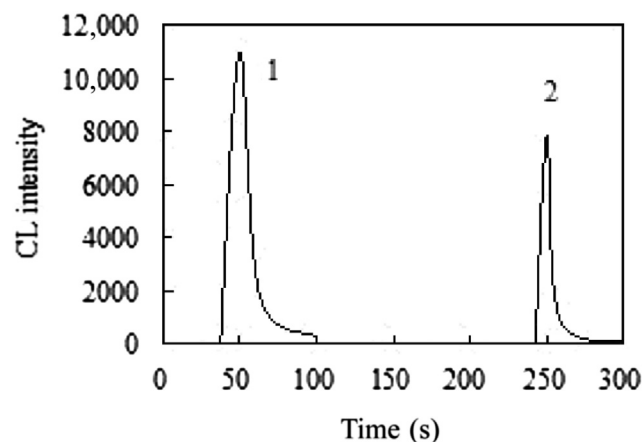
Milk samples were purchased from local supermarkets. A 7-mL milk sample was mixed with 3 mL acetic acid solution (v/v, 3%), then the mixture was centrifuged (3500 rpm, 3 minutes). Next, 5 mL supernatant was transferred into a test tube, into which 200  $\mu\text{L}$  of 3.0 mol/L NaOH was added, and the solution was centrifuged (821.7 g, 3 minutes). Then, 1 mL final solution was removed and placed into a 10-mL volumetric flask and was diluted to graduation with ultrapure water.

## 3. Results and discussion

### 3.1. Mechanism of the CL reaction

#### 3.1.1. Kinetic characteristic of the CL reaction

The CL kinetic characteristics of the NBS–DCF reaction and the NBS–DCF–urea reaction were examined using the static system of the CL analyzer. As shown in Figure 2, a strong CL signal (peak 1) was observed when 1.0 mL of NBS solution ( $1.0 \times 10^{-2}$  mol/L) was injected into 1.0 mL of  $9.0 \times 10^{-4}$  mol/L DCF solution (in  $4.0 \times 10^{-2}$  mol/L NaOH). After about 50 seconds, the CL reaction terminated and the CL signal declined to the baseline level. Subsequently, a PCL reaction (peak 2) was initiated when 1.0 mL of  $5.0 \times 10^{-6}$  g/mL urea (in  $1.0 \times 10^{-4}$  mol/L NaOH) was injected into the above-mentioned reaction mixture. The signal dropped about 90% after approximately 30 seconds. Under identical conditions, no signal was observed when the urea solution was replaced by the blank solution ( $1.0 \times 10^{-4}$  mol/L NaOH). The result indicated that the reaction initiated by urea in the NBS–DCF system was a PCL reaction.



**Figure 2** – Kinetic curve of the PCL reaction. (1) 1.0 mL of  $1.0 \times 10^{-2}$  mol/L NBS solution was injected into 1.0 mL of  $5.0 \times 10^{-4}$  mol/L dichlorofluorescein solution (in 0.04 mol/L NaOH). (2) 1.0 mL of  $5.0 \times 10^{-6}$  g/mL urea (in  $1.0 \times 10^{-4}$  mol/L NaOH) was injected into the above reaction mixture. NBS = N-bromosuccinimide; PCL = postchemiluminescence.

#### 3.1.2. Luminant of the PCL reaction

It was considered that the reaction mechanism was the same in both urea–NBS–DCF CL system and  $\text{NH}_4^+$ –NBS–DCF CL system, and the luminant of both CL systems was  $\text{N}_2^*$  [13]. In order to test this, further experiments were performed in this work.

The CL spectra of NBS–DCF, urea–NBS–DCF, and  $\text{NH}_4^+$ –NBS–DCF were measured using a refitted 970CRT spectrofluorometer. In Figure 3, no obvious CL spectrum was observed in the NBS–DCF system because the CL signal was too weak. However, the CL spectra of urea–NBS–DCF system and  $\text{NH}_4^+$ –NBS–DCF system were obtained with the same maximum emission wavelength at 551.6 nm. Hence, it could be concluded that the luminant of the urea–NBS–DCF system and  $\text{NH}_4^+$ –NBS–DCF were the same.

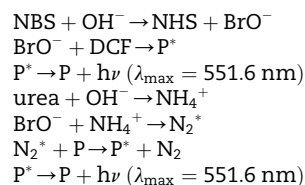
For the purpose of further ascertaining the luminant of the three CL systems, the fluorescence spectra of DCF, NBS–DCF, NBS–DCF– $\text{NH}_4^+$ , and NBS–DCF–urea were scanned. As shown in Figure 4, the maximum emission wavelength of DCF was at 540.2 nm, whereas the maximum emission wavelength of the other three solutions was at 551.6 nm, which indicated that DCF was oxidized by NBS when they were mixed. Because the maximum emission wavelength of the three mixtures was consistent with the above-mentioned maximum CL emission wavelength, the CL luminant may be the oxidative product of DCF.

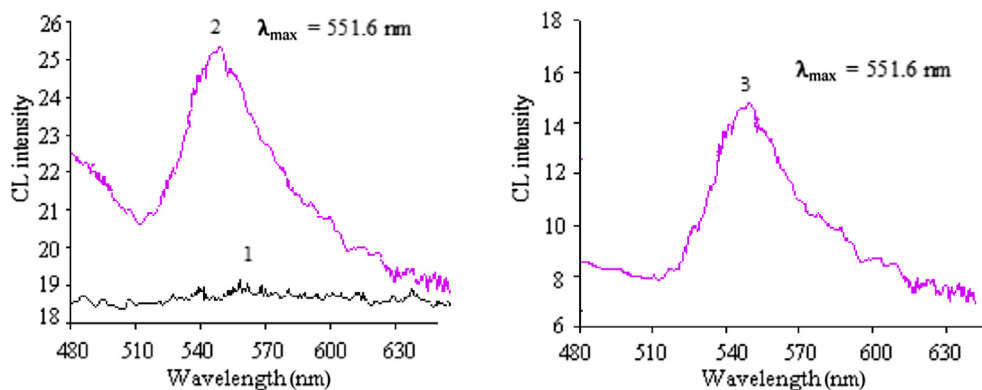
Moreover, the UV–vis absorption spectra of different solutions were drawn. As shown in Figure 5, the absorption peak of DCF was similar to that of DCF– $\text{NH}_4^+$ . Therefore, DCF did not react with  $\text{NH}_4^+$ . However, in the spectra of NBS–DCF, NBS–DCF– $\text{NH}_4^+$ , and NBS–DCF–urea, a new absorption peak at 516.2 nm can be observed whereas the characterized absorption peak of DCF at 503.6 nm disappeared. It demonstrated that DCF was oxidized and a new substance was generated.

From the above experiments, it could be concluded that DCF was oxidized by NBS when they were mixed, and the oxidative product of DCF was the luminant of the related CL system. The luminant of the urea–NBS–DCF system was same as that of the  $\text{NH}_4^+$ –NBS–DCF system.

#### 3.1.3. Mechanism of the PCL reaction

A probable PCL mechanism of the NBS–DCF–urea system was proposed as follows. In alkaline condition, NBS hydrolyzed to hypobromite [20] with strong oxidizability. Hypobromite oxidized DCF to generate a product (P) at its excited state ( $\text{P}^*$ ). When  $\text{P}^*$  came back to the ground state, CL was generated ( $\lambda_{\text{max}} = 551.6$  nm). Then, when urea was added into the reaction mixture, urea hydrolyzed to produce ammonium ( $\text{NH}_4^+$ ) [21]. The excess NBS oxidized  $\text{NH}_4^+$  to engender  $\text{N}_2^*$  [22]. Subsequently,  $\text{N}_2^*$  transferred its energy to P so that P was excited again accompanied by PCL ( $\lambda_{\text{max}} = 551.6$  nm). The mechanism can be simply described as follows:





**Figure 3** – CL spectra. (1)  $1.0 \times 10^{-2}$  mol/L NBS +  $5.0 \times 10^{-4}$  mol/L DCF (in  $4.0 \times 10^{-2}$  mol/L NaOH). (2)  $5.0 \times 10^{-5}$  g/mL  $\text{NH}_4^+$  +  $1.0 \times 10^{-2}$  mol/L NBS +  $5.0 \times 10^{-4}$  mol/L DCF (in  $4.0 \times 10^{-2}$  mol/L NaOH). (3)  $5.0 \times 10^{-4}$  g/mL urea +  $1.0 \times 10^{-2}$  mol/L NBS +  $9.0 \times 10^{-4}$  mol/L DCF (in  $4.0 \times 10^{-2}$  mol/L NaOH). CL = chemiluminescence; DCF = dichlorofluorescein; NBS = N-bromosuccinimide; PCL = postchemiluminescence.

### 3.2. Optimization of the reaction conditions

A series of experiments was performed to select the optimal analytical conditions using  $5.0 \times 10^{-8}$  g/mL urea solution.

#### 3.2.1. Flow system

Initially, to obtain maximum PCL signals, multifold flow systems were carried out. When using the system shown schematically in Figure 1, the sample solution could sufficiently react to the mixture of NBS and DCF. Thus, strong PCL signals were observed. Finally, the flow system in Figure 1 was selected.

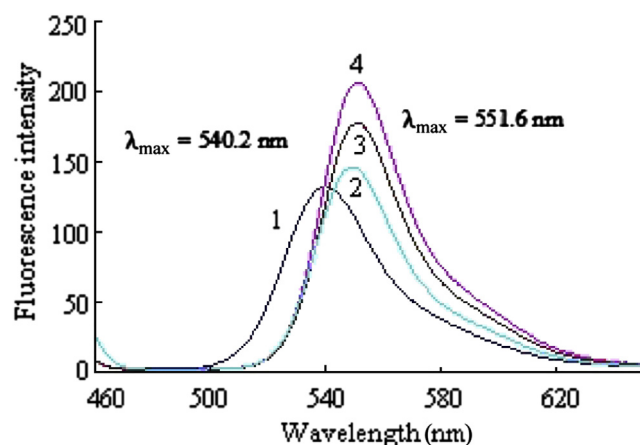
#### 3.2.2. Length of mixing tube and flow rate of $P_2$

Because the experiment was based on the PCL of urea in the DCF–NBS system, the length of the mixing tube and the flow

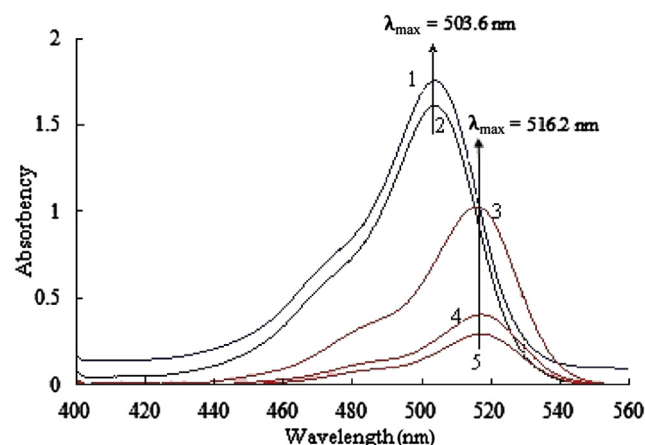
rate of  $P_2$  influenced the PCL signals. From the kinetic curve, the PCL reaction was fast. Therefore, the CL signals would decay seriously if the flow rate was too slow or if the mixing tube was too long. Although the mixing tube was too short, DCF and NBS would react inadequately and a low signal/noise (S/N) ratio was obtained because of the high baseline. The effect of the flow rate of  $P_2$  and the length of the mixing tube were studied respectively when the flow rate of  $P_1$  was fixed at 1.2 mL/min. In view of the S/N value and reagent consumption, 90 cm was chosen as the length of the mixing tube and 1.5 mL/min as the flow rate of  $P_2$ .

#### 3.2.3. Concentration of NBS solution, DCF solution, and NaOH

NBS was the oxidant of the PCL system so that its concentration was an important factor to the CL signals. The effect of



**Figure 4** – Fluorescence spectra. (1)  $4.0 \times 10^{-6}$  mol/L DCF. (2)  $2.5 \times 10^{-3}$  mol/L NBS +  $3.0 \times 10^{-5}$  mol/L DCF. (3)  $2.5 \times 10^{-3}$  mol/L NBS +  $3.0 \times 10^{-5}$  mol/L DCF +  $1.0 \times 10^{-7}$  mol/L  $\text{NH}_4^+$ . (4)  $2.5 \times 10^{-3}$  mol/L NBS +  $3.0 \times 10^{-5}$  mol/L DCF +  $5.0 \times 10^{-6}$  g/mL urea ( $5.0 \times 10^{-4}$  mol/L NaOH). DCF = dichlorofluorescein; NBS = N-bromosuccinimide; PCL = postchemiluminescence.



**Figure 5** – UV-vis absorption spectra. (1)  $3.0 \times 10^{-5}$  mol/L DCF. (2)  $1.0 \times 10^{-7}$  g/mL  $\text{NH}_4^+$  +  $3.0 \times 10^{-5}$  mol/L DCF. (3)  $2.5 \times 10^{-3}$  mol/L NBS +  $3.0 \times 10^{-5}$  mol/L DCF. (4)  $2.5 \times 10^{-3}$  mol/L NBS +  $3.0 \times 10^{-5}$  mol/L DCF +  $1.0 \times 10^{-7}$  g/mL  $\text{NH}_4^+$ . (5)  $2.5 \times 10^{-3}$  mol/L NBS +  $3.0 \times 10^{-5}$  mol/L DCF +  $5.0 \times 10^{-6}$  g/mL urea. DCF = dichlorofluorescein; NBS = N-bromosuccinimide; PCL = postchemiluminescence.

NBS concentration was examined in the range from  $5.0 \times 10^{-3}$  to  $5.0 \times 10^{-2}$  mol/L, and  $1.0 \times 10^{-2}$  mol/L of NBS solution was selected.

DCF solution was used as precursor of luminant in the PCL system, and its concentration directly influenced the PCL intensity. The effect of DCF concentration was examined in the range from  $5.0 \times 10^{-5}$  to  $2.0 \times 10^{-3}$  mol/L, and  $9.0 \times 10^{-4}$  mol/L DCF solution gave the best PCL signal.

Alkaline solution could improve the oxidation capacity of NBS so that it contributed to the generation of the luminant. The alkalinity was changed by adjusting the concentration of NaOH added into the DCF solution in the range of  $5.0 \times 10^{-3}$  to  $5.0 \times 10^{-1}$  mol/L. The PCL signal reached its highest level when the concentration of NaOH was  $4.0 \times 10^{-2}$  mol/L.

### 3.2.4. Medium of urea/sample solution

Various media of urea/sample solution were tested, including water, PBS buffer, Tris buffer, NaOH, HCl, and sodium dodecyl sulfate. The results indicated that urea could generate maximum PCL signal in alkaline medium, and NaOH solution was the best reaction medium. The concentration of NaOH was examined in the range  $1.0 \times 10^{-5}$  to  $1.0 \times 10^{-2}$  mol/L. Finally,  $5.0 \times 10^{-4}$  mol/L NaOH was used.

### 3.3. Analytical characteristics

Under the optimized experimental conditions, the linear experiments between the PCL intensity and the concentration of urea were performed. PCL intensity presented a good linearity with the concentration of urea ranging from  $2.0 \times 10^{-9}$  to  $1.0 \times 10^{-6}$  g/mL. The regression equation was  $\Delta I = 5.24C + 14.02$  with a correlation coefficient ( $r$ ) of 0.9992, where  $C$  is the urea concentration ( $10^{-8}$  g/mL). The relative standard deviation was 1.3% for 11 parallel determinations of  $5.0 \times 10^{-8}$  g/mL standard urea solution. According to the suggestions of the International Union of Pure and Applied Chemistry, the limit of detection was  $7 \times 10^{-10}$  g/mL.

### 3.4. Effect of interferences

The influence of common foreign ions was studied with  $5.0 \times 10^{-8}$  g/mL urea solution. A substance was considered to show no interference if the variation of the CL intensity was within  $\pm 5\%$ . No interference was encountered from (tolerance ratios of foreign species to  $5.0 \times 10^{-8}$  g/mL urea) the following: citric acid, tartaric acid, glucose, ethanol, lactic acid,  $\text{SO}_4^{2-}$ ,  $\text{NO}_3^-$ ,  $\text{K}^+$ ,  $\text{Cl}^-$  (1000);  $\text{CO}_3^{2-}$ ,  $\text{PO}_4^{3-}$ ,  $\text{Cd}^{2+}$ ,  $\text{Pb}^{2+}$ ,  $\text{HPO}_4^{2-}$  (500); lactose, fructose,  $\text{Zn}^{2+}$ ,  $\text{Cu}^{2+}$  (100);  $\text{Fe}^{3+}$ ,  $\text{Fe}^{2+}$ ,  $\text{Mg}^{2+}$ ,  $\text{Al}^{3+}$ ,  $\text{I}^-$  (50); uric acid, ascorbic acid,  $\text{Ca}^{2+}$ ,  $\text{Ba}^{2+}$  (10);  $\text{Cr}^{3+}$ ,  $\text{Ni}^{2+}$  (5).

### 3.5. Sample analysis

In order to verify the feasibility of the suggested method, urea in the milk was determined using the method described in the section Procedure. The sample solutions were prepared as described in the section Sample preparation. The determination results are shown in Table 1. The result of  $t$  test showed that there was no significant difference between the results obtained using the proposed method and those obtained by the colorimetric method [19] at the confidence level of 95%.

**Table 1 – Determination results of urea in milk ( $n = 5$ ).**

Sample	This method ( $10^{-4}$ g/mL)	RSD (%)	Colorimetric method ( $10^{-4}$ g/mL)	RSD (%)
Sample.1	2.16	1.1	2.18	1.9
Sample.2	1.98	1.7	2.01	1.8
Sample.3	2.24	1.2	2.26	2.2

RSD = relative standard deviation.

## 4. Conclusion

In this paper, a new method of flow injection PCL to determine urea was established, and the reaction mechanism in the NBS–DCF–urea CL system was proposed. Compared with the existing CL method of detecting urea, this method possesses higher sensitivity because the background signals are reduced dramatically in the PCL system. Moreover, this method was used to quantify urea in the milk, and the result was satisfactory.

## Conflicts of interests

The authors declare that there are no conflicts of interests.

## Acknowledgments

The authors gratefully acknowledge the financial support of this research by the National Science Foundation of Shaanxi Province (No. 2011JQ2011) and the Scientific Research Foundation of Shaanxi Provincial Key Laboratory (No. 15JS099), China.

## REFERENCES

- [1] Tietz NW, Berger S. *Fundamentals of clinical chemistry*. Philadelphia: W. B. Saunders; 1976.
- [2] Koebel M, Elsener M. Determination of urea and its thermal decomposition products by high-performance liquid chromatography. *J Chromatogr A* 1995;689:164–9.
- [3] áde Faria LC, Neto GO. Determination of urea in serum by using naturally immobilized urease in a flow injection conductimetric system. *Analyst* 1991;116:357–60.
- [4] Castillo-Ortega M, Rodriguez D, Encinas J, Plascencia M, Mendez-Velarde F, Olayo R. Conductometric uric acid and urea biosensor prepared from electroconductive polyaniline–poly(*n*-butyl methacrylate) composites. *Sens Actuators B Chem* 2002;85:19–25.
- [5] Lakard B, Herlem G, Lakard S, Antoniou A, Fahys B. Urea potentiometric biosensor based on modified electrodes with urease immobilized on polyethylenimine films. *Biosens Bioelectron* 2004;19:1641–7.
- [6] Magalhães JM, Machado AA. Urea potentiometric biosensor based on urease immobilized on chitosan membranes. *Talanta* 1998;47:183–91.
- [7] Bertocchi P, Compagnone D, Palleschi G. Amperometric ammonium ion and urea determination with enzyme-based probes. *Biosens Bioelectron* 1996;11:1–10.

- [8] Mana H, Spohn U. Selective flow injection procedures for the determination of nitrogen containing analytes by gasdialytic–fluorimetric detection of enzymatically generated ammonia. *Anal Chim Acta* 1996;325:93–104.
- [9] Chen H, Wang E. Optical urea biosensor based on ammonium ion selective membrane. *Anal Lett* 2000;33:997–1011.
- [10] Cano MP, Hernandez A, Ancos Bd. High pressure and temperature effects on enzyme inactivation in strawberry and orange products. *J Food Sci* 1997;62:85–8.
- [11] Adams J. Review: enzyme inactivation during heat processing of food-stuffs. *Int J Food Sci Technol* 1991;26:1–20.
- [12] Hernández A, Cano MP. High-pressure and temperature effects on enzyme inactivation in tomato puree. *J Agric Food Chem* 1998;46:266–70.
- [13] Li B, Zhang Z, Jin Y. Flow-injection chemiluminescence determination of urea by oxidation with N-bromosuccinimide. *Anal Lett* 2001;34:2141–51.
- [14] Hu X, Takenaka N, Kitano M, Bandow H, Maeda Y, Hattori M. Determination of trace amounts of urea by using flow injection with chemiluminescence detection. *Analyst* 1994;119:1829–33.
- [15] Qin W, Zhang Z, Peng Y. Plant tissue-based chemiluminescence flow biosensor for urea. *Anal Chim Acta* 2000;407:81–6.
- [16] Lewis SW, Francis PS, Lim KF, Jenkins GE. Monitoring urea levels during haemodialysis with a pulsed-flow chemiluminescence analyser. *Anal Chim Acta* 2002;461:131–9.
- [17] Du J, Liu W, Lu J. Investigation on the chemiluminescence behavior of alkaline earth metal ions  $Mg^{2+}$ ,  $Ca^{2+}$ ,  $Sr^{2+}$  and  $Ba^{2+}$  in luminol–permanganate reaction. *Acta Chim Sin* 2004;62:1323–6.
- [18] Sun S, Lu J. Flow-injection post chemiluminescence determination of atropine sulfate. *Anal Chim Acta* 2006;580:9–13.
- [19] Petrun N, Litvinchuk N. Use of dimethylglyoxime for the determination of urea in urine and blood by colorimetric method. *Lab Delo* 1970;7:414.
- [20] Pulgarín JM, Molina AA, Boras N. Determination of piroxicam in pharmaceutical preparations by continuous-flow chemiluminescence. *Anal Methods* 2010;2:76–81.
- [21] Halvatzis SA, Timotheou-Potamia MM. Continuous-flow chemiluminometric determination of ammonium ion in fertilizers. *Talanta* 1993;40:1245–54.
- [22] Jurgensen H, Winefordner JD. Use of active nitrogen in analytical chemiluminescence spectrometry. *Talanta* 1984;31:777–82.